



THE ASSESSMENT FILES

COUNTY ASSESSORS ASSOCIATION OF OKLAHOMA

VOLUME 11

OCTOBER 2003

News From The President

I am so excited. We are only one week away from our 92nd annual convention. We should give a prize to the person who has attended the most of these meetings. I bet Glendel Rushing, Bryan County Assessor, would be in the running. I want everyone to have a great time and come away with some beneficial information.. Or at least a nice Bingo prize. We have a full agenda planned. Jeff McMahan, State Auditor and Inspector, and Tom Kemp, Chairman of the Oklahoma Tax Commission, will speak to us. We will have all our usual speakers, Jeff Spelman, Scott Warren, Gary Snyder, and Doug Warr. And we will have a few unusual ones, Larry Stein and Pat Hall, who will present "The Opinion Zone" on Thursday. Our keynote speaker, John Irvin, will be great. We will also do the roll call on Thursday, because that seems to be the day of our largest attendance.

Now for the fun stuff. Be sure and bring a unique bingo gift and your wildest Halloween costume. We will have our regular Wednesday night Bingo game at 7:00 p.m. Then if you are still awake you can go to Chisholm's and dance the rest of the night away. Thursday night we will kick off with the Halloween costume contest at 7:30 p.m., followed by the Casino Night. We will have bingo, dominoes, or card games for anyone who might not want to try their luck at the tables. We will give everyone play money at the door and you can play games and win more money for the auction which will be held at approximately 10:00 p.m. Gary Snyder has agreed to be our auctioneer. Donna Giddens has planned a fun time for us at the costume contest. Remember there are cash prizes for the best costumes.

In case you have not heard, there is already exemption talk at the Capitol. They are discussing changing the income qualifications for the freeze and lowering the 5% cap. We will discuss these items at our meeting.

*Kathi Mask,
President*



*November Flower - Chrysanthemum
November Gemstone—Topaz*

NOVEMBER BIRTHDAYS

<i>J.C. Brooks</i>	<i>Jackson</i>	<i>Nov 2</i>
<i>Loretta Hall</i>	<i>Beckham</i>	<i>Nov 9</i>
<i>Phyllis Ray</i>	<i>Grady</i>	<i>Nov 25</i>
<i>Sharon Butler</i>	<i>Seminole</i>	<i>Nov 29</i>

Inside this issue:

President's News-Kathi Mask	1
Reporter News-Ralph Wilson	2
Contest Winners	2
Weird Facts	3
CODA Pictures	4
In Our Prayers	4
Ad Valorem Update—Jeff Spelman	5
Ever Wonder	6

Reporter News

Trick or Treat ...

The holiday season is approaching quickly, and we only have one more newsletter to put out before I turn everything over to the new reporter.

It has been a busy year, and we are now learning the new Windows version of CAMA. Glen Blood and Greg Harmon installed the software in our county a couple of weeks ago. We have had a few minor problems, but I think its going to be okay. Several counties throughout the state should have it installed by now.

The Assessor Conference is coming up, and I hope everyone is planning to attend. I'm looking forward to seeing everyone and having a great week. Hope to see you there!

Sincerely,

Ralph Wilson



Congratulations



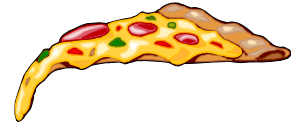
Winners of last month's Halloween contest were Linda Coleman, Deputy from Tillman County, Scott Kirby, Assessor, Murray County, and Cathy Hokit, Assessor, Stephens County.

They were the first three (and only) callers who correctly guessed the monsters in costume. Our monsters were Randy Wintz, Lincoln County Assessor and Wade (the blood sucker) Patterson, Assessor, Garfield County. The winners received a copy of the County Assessors Directory.

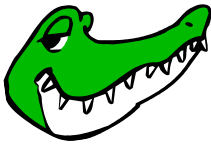
Don't forget to get your costume ready and bring it to the County Assessors Fall Conference. A great time is planned. Don't miss out.

WEIRD FACTS

Americans on average eat 18 acres of pizza per day.

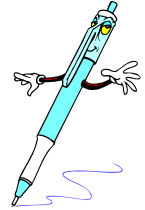


All polar bears are left-handed.



A crocodile cannot stick out its tongue.

On average, 100 people choke to death on ballpoint pens every year.



Our eyes are always the same size from birth, but our nose and ears never stop growing.



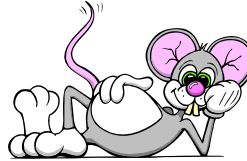
Most lipstick contains fish scales.

No piece of paper can be folded in half more than seven times.

Apples, not caffeine, are most efficient at waking you up in the morning.



Walt Disney was afraid of mice.



Turtles can breathe through their rear ends.

The first product with a barcode was Wrigley's Gum.



The first toilet ever seen on television was on "Leave It To Beaver".

No NFL team which plays its home games in a domed stadium has ever won the Super Bowl.

THOUGHT FOR THE DAY

If you try to fail, and succeed, which have you done?

Thanks to Wade Patterson, Garfield County Assessor and Monica Schmidt, Woods County Assessor for providing me with some pictures from the CODA Fall Conference. These were taken at the Governor's mansion where Jeff McMahan, State Auditor & Inspector, hosted a fish fry for county officers and deputies last month. We all had a great time.



Kathi Mask, Karen Perkins, Monica Schmidt, Debbie Gentry, and Debbie Collins stop to pose for a picture at the Governor's Mansion.



Ralph Wilson and deputy Jackie Leierer



NO COMMENT

In Our Prayers ...

Eloise McCully, Kingfisher County Assessor lost her mother earlier this month. And newly elected Cimarron County Assessor, Patty Hiner, is battling cancer. Please remember these members of our assessor association family in your prayers.

Also, Joy Anderson, Pottawatomie County Assessor would remind everyone again to submit information to her on deputies and assessors that have passed away since last year's Fall Assessor Conference. She will need their name, years served, and the county they worked for. Her fax number is 405-273-6450, or you can email her the information at Pottawatomie@OKAssessor.com.

Ad Valorem Update

Greetings from the Ad Valorem Division.

We're back! Looks like it's time for the County Assessors' Association Convention at the end of the month. That should be fun. I'm looking forward as I always do to seeing everyone and hope we have a continuation of this great Oklahoma fall weather.

On behalf of the Ad Valorem Division, thanks to President Kathi Mask, Vice President Debbie Collins, Secretary/Treasurer Denise Heavner, and Reporter Ralph Wilson for all their hard work this year. They've done a great job and President Kathi has been super to work with. She doesn't seem like she'd be a biker girl does she? (That's a politically correct reference to the family motorcycle she and her husband are riding these days.)

Window's CAMA update is proceeding. The County Computer Coordination Committee (4-C Committee lead by Debbie Gentry will be meeting several times this fall.) We appreciate lots of support from the first bold explorers.

Our session with the Interim studies last week was interesting. A number of county assessors turned out for the meeting. Ad valorem is always a topic of interest particularly in these budget times.

We have a new Attorney General opinion that we will be discussing, and anything else that comes up.

Our Equalization study has just about wrapped up and our CAMA staff folks---Glenn Blood, Greg Harmon, Larry Martin, Marsha Rayburn, and Charles Wilson have really worked on getting the program in as good of shape as possible. I'm sure we'll have some problems, but hang in there, we'll get it fixed as quick as possible.

Comment on baseball. I couldn't help thinking about county assessors and deputies after the Cubs lost their game the other night. A Cubs fan reached out to catch the foul ball in the stands just as fielder was trying to catch it. The Umpire had to make a decision on the ball and it reminded me of hard decisions in the ad valorem system that have to be made some time in that gray area between clear black and white. It's part of the job of being the guardian of fairness. We appreciate your efforts out there. It's a hard job.

Sincerely,

Jeff Spelman, CAE Director Ad Valorem Division



P.S. My wife's mom just recently got a new computer, and her four year old great grand daughter took it upon herself to explain the computer to her. "Grammy, this is your TV set (the monitor) This thing on a string is the mouse. Those letters are the keyboard and that box on the floor is the motor."

Aoccdrnig to a rscheearch at Cmabrigde Uinervtisy, it deosn't mttar in waht oredr the ltteers in a wrod are, the olny iprmoeint tihg is taht the frist and lsat ltteer be at the rghit pclae.

The rset can be a total mses and you can sitll raed it wouthit a porbelm. Tihs is bcuseae the huamn mnid deos not raed ervey lteter by istlef, but the wrod as a wlohe.

Amzanig huh?

COUNTY ASSESSORS ASSOCIATION
OF
OKLAHOMA

500 East Broadway
Fairview, Oklahoma 73737

Phone: 580-227-4821

Fax: 580-227-2736

Email: rwilson@auroraok.org



EVER WONDER

- ...why the sun lightens our hair, but darkens our skin?
- ...why women can't put on mascara with their mouths closed?
- ...why you don't ever see the headline "Psychic Wins Lottery"?
- ...why "abbreviated" is such a long word?
- ...why doctors call what they do practice?
- ...why do you have to click Start to stop Windows?
- ...why lemon juice is made with artificial flavor, while dish washing liquid is made with real lemons?
- ...why there isn't any mouse-flavored cat food?
- ...why Noah didn't swat those two mosquitoes?
- ...why they don't make the whole plane out of the material used for the indestructible black box?
- ...why they are called apartments when they are all stuck together.
- ...why sheep don't shrink when it rains?
- ...if con is the opposite of pro, is Congress the opposite of progress?
- ...why they call the airport "the terminal" if flying is so safe?
- ...why the man who invests all your money is called a broker?
- ...why the time of the day with the slowest traffic is called rush hour?
- ...why the third hand on the watch is called the second hand?
- ...why a boxing ring is square?
- ...why glue doesn't stick to the inside of the bottle?